

EZ-Flame

A truly advanced and user friendly flame detection system engineered for critical safety functions in the Power Generation, Petrochemical, Metallurgy, and Pulp & Paper industries. Dual channel capabilities for IR, UV, or a combination UV and IR flame scanners provide flexibility to our customers. Each channel on the amplifier can store two user defined program files to distinguish unique flame characteristics.

Safe-Fire's EZ-Flame detection system performs accurate measurements on burner flames at various stages of boiler startup and during operation to deliver reliable performance in oil, gas, and coal-fired burner applications.

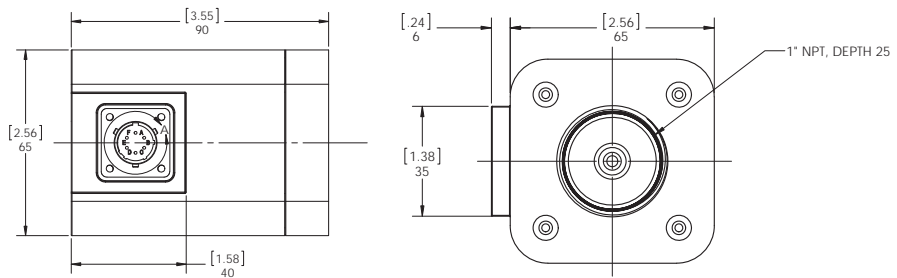
Highlighted Features:

Superb flame discrimination	Utilizes 3 flame characteristics for reliable detection
UV, IR and mixed UV/IR scanners	User defined flame thresholds
Dual-channel amplifier	Simple and intuitive user interface
Optional fiber optic cable assemblies	2 selectable program files per channel
Electronic self-checking routine	Explosion Proof models available

Specifications

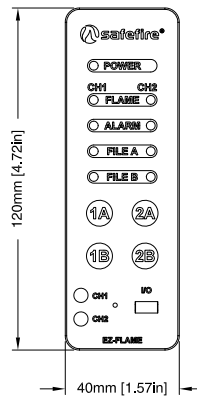
Flame Scanner

Operational Temperature	-40°C to 85°C @ 0 - 95% Humidity
Housing Material	Aluminum
Thread	1" NPT
Sensor	Photodiode
Infrared Range	900 - 1700nm
Ultraviolet Range	245 - 380nm
Electrical Connection	MS-3112E10-6P (Amphenol)
Dimension (L x W x H)	2.56" x 3.55" x 2.80"
Weight	1.43lbs / 0.65kg



Amplifier

Power Supply	24VDC @ 0.20A
Operational Temperature	-40°C to 60°C @ 0 - 95% Humidity
Output Relay	3 x SPDT
Analog Output	4-20mA
Dimension (L x W x H)	1.57" x 5.04" x 4.72"
Weight	1.1lbs / 0.50kg



Amplifier Base

Terminals	29
Wire Size	18 AWG
Mounting	Din 35
Dimension (L x W x H)	2.24" x 6.96" x 1.98"
Weight	0.44lbs / 0.20kg

